

**Website Source:**

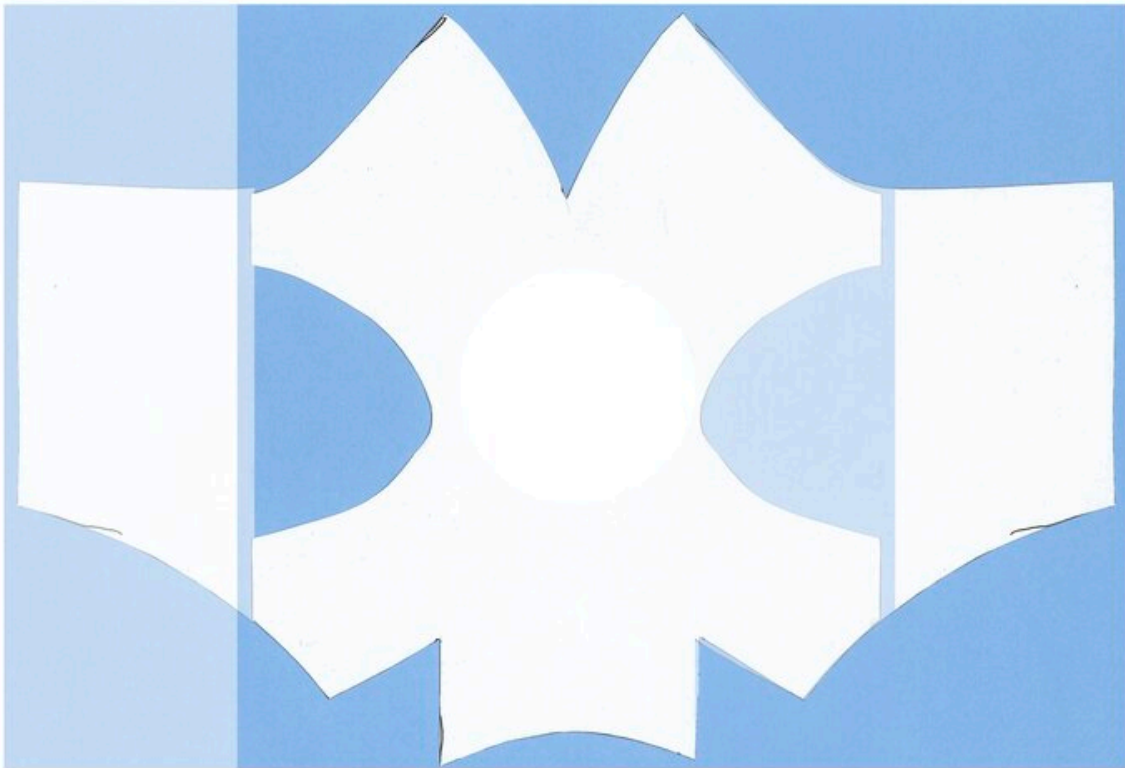
[http://www.unitedsound.org/mask?fbclid=IwAR3Kgo9eZDO0DhLvFstFlnv7qXMdDY\\_1KN9P0qtvAzrR8n9fdITN8nvC0DY](http://www.unitedsound.org/mask?fbclid=IwAR3Kgo9eZDO0DhLvFstFlnv7qXMdDY_1KN9P0qtvAzrR8n9fdITN8nvC0DY)

## **FITTED MASK PATTERN (not Pleated)**

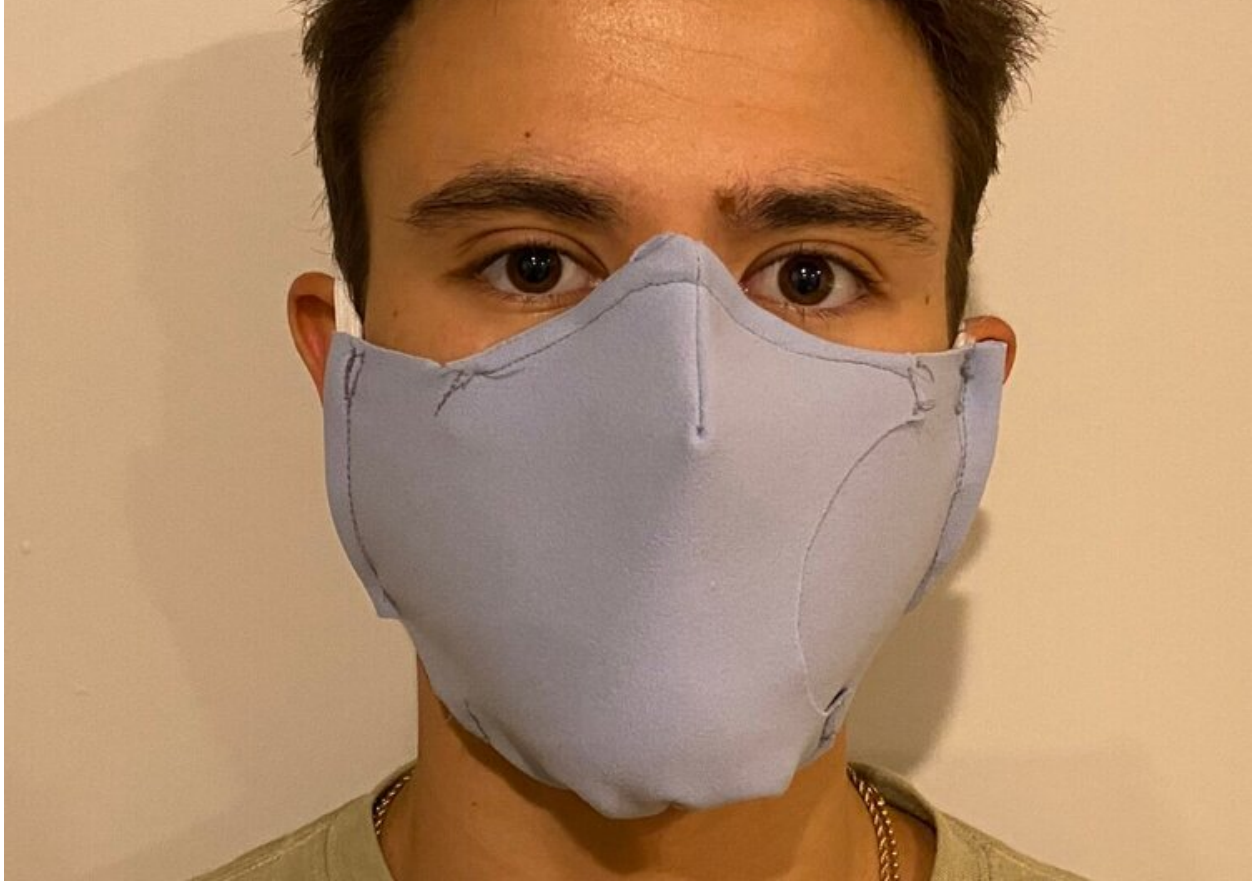
**FITTED MASK:** Works much better, slightly more work...

**FITTED MASK PATTERN**

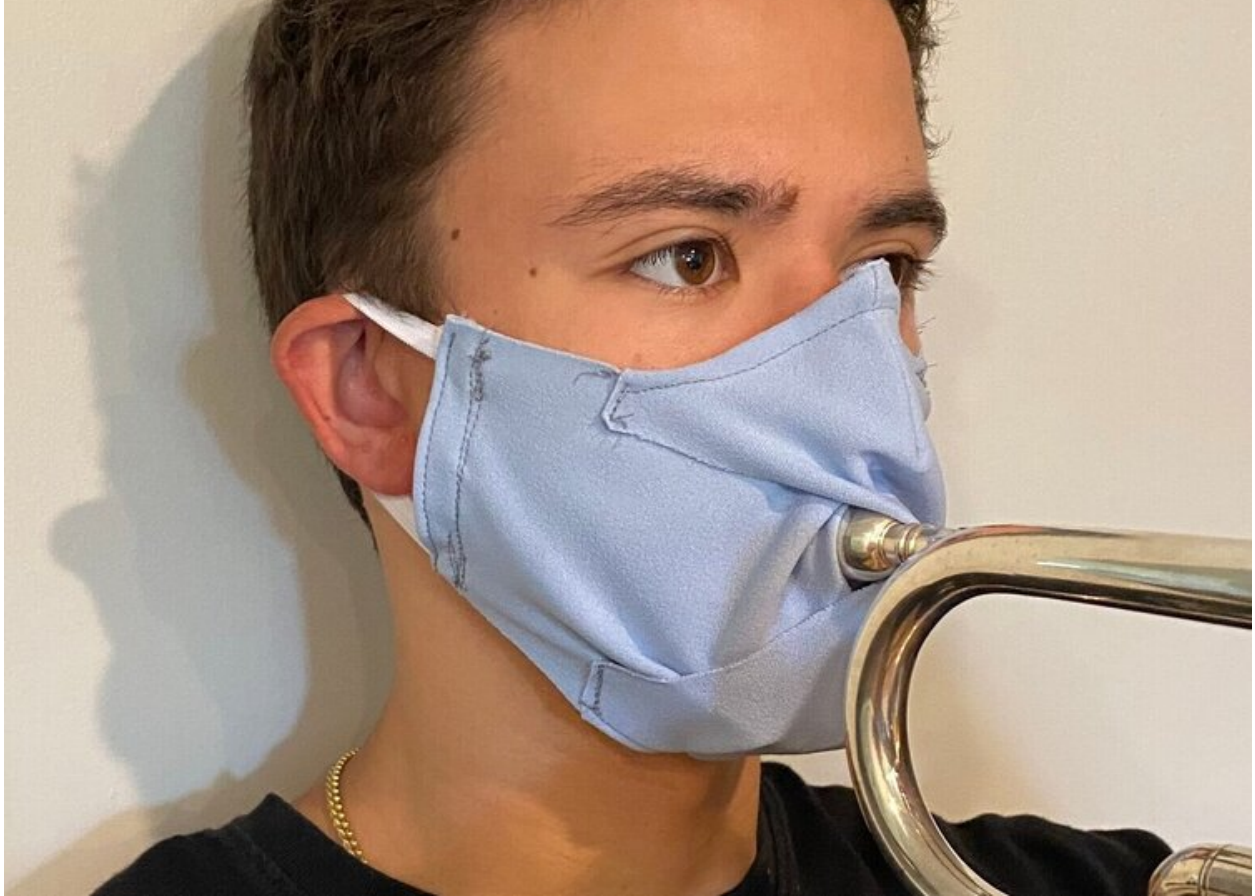
[View fullsize](#)



[View fullsize](#)

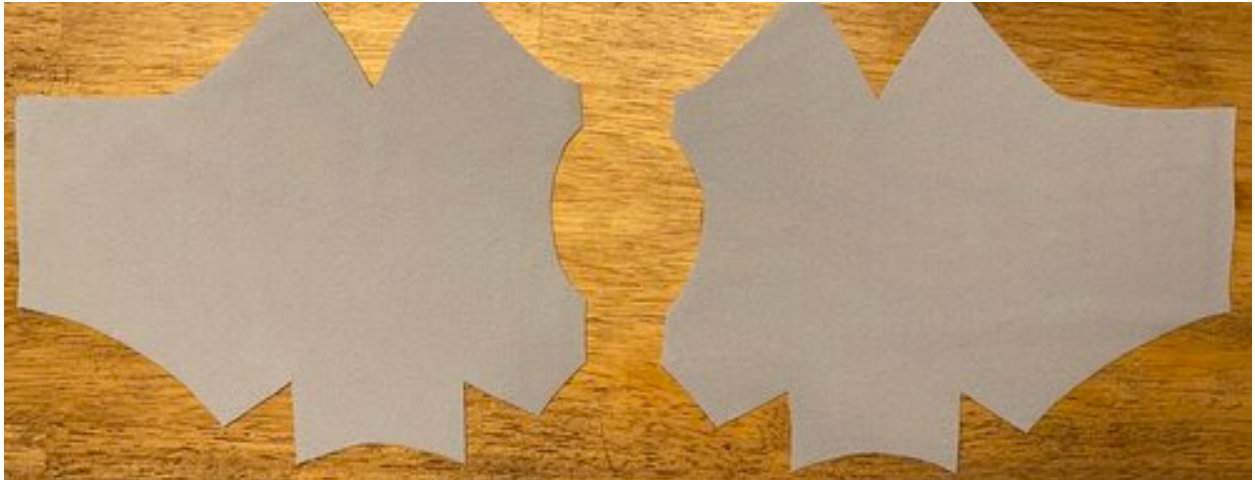


[View fullsize](#)



It seems more complicated than the other one, but doesn't really take more time and stays on way better. Here are some basic instructions. First, measure to make sure that your pattern printed out the right size.

[View fullsize](#)

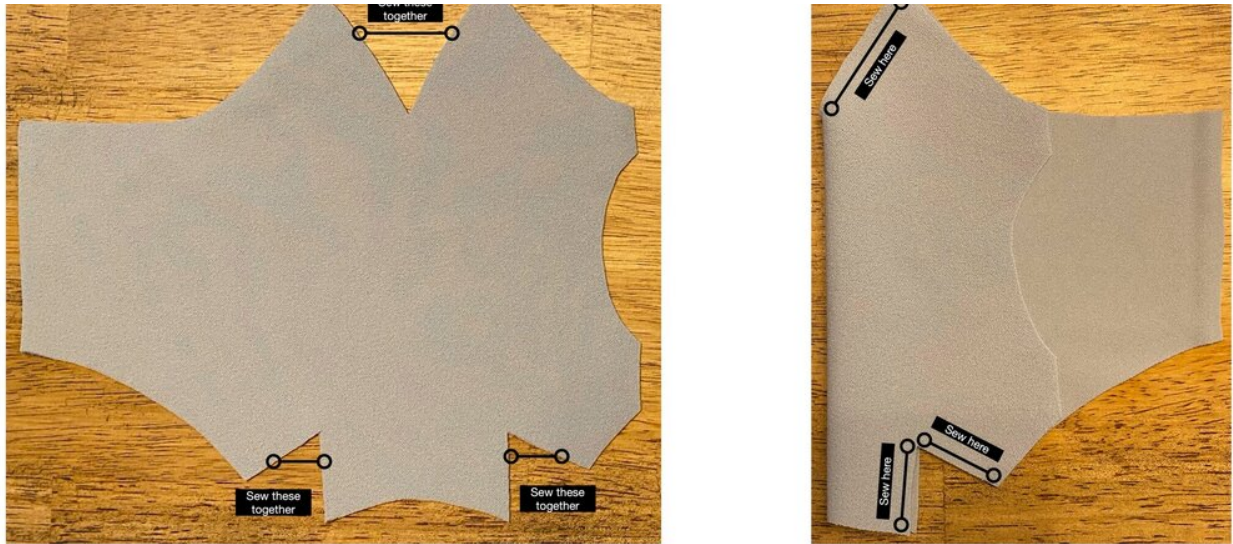


1. Cut out mirror images of the pattern (with fabric on right side, cut one, then turn the pattern over for the other)
2. Use a serger to sew around all sides of both pieces



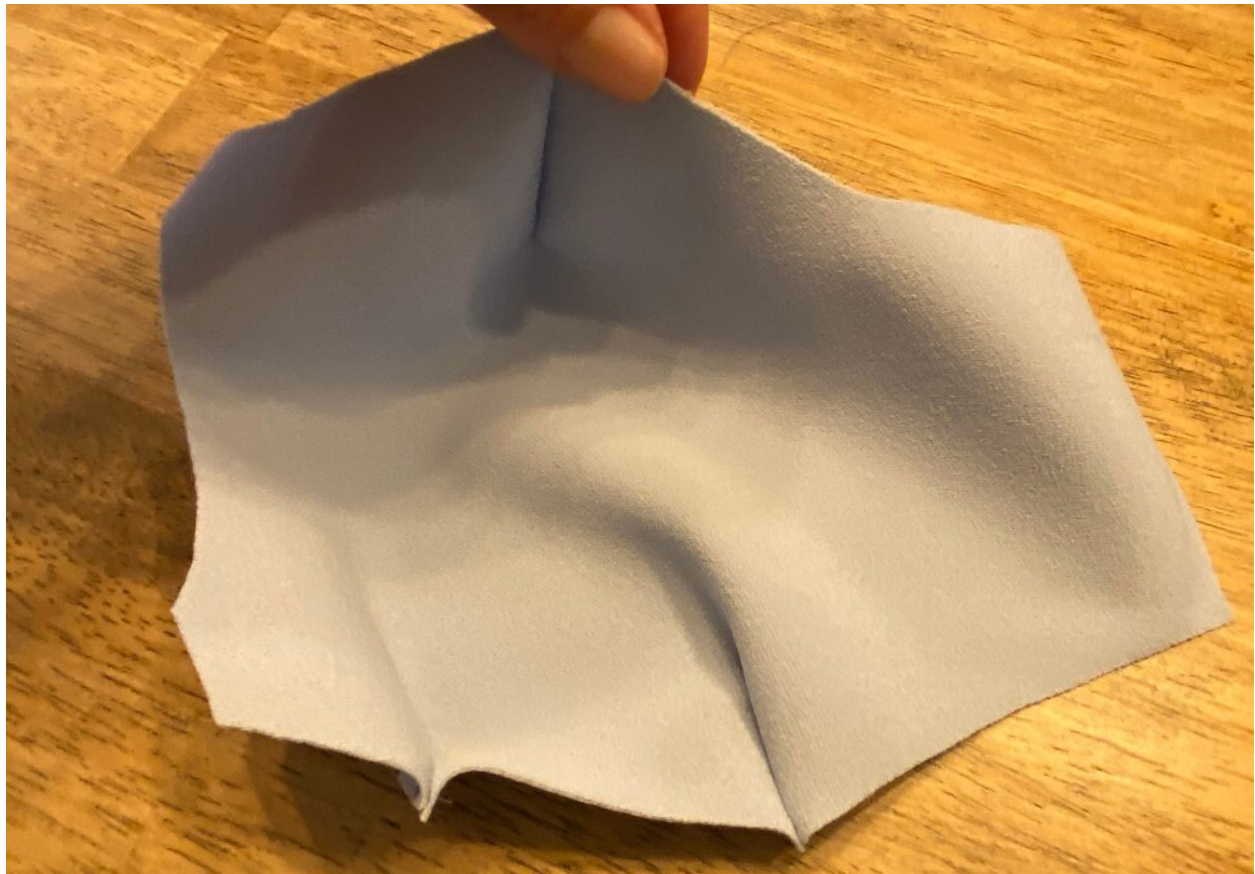
3. On the wrong side of the fabric, sew the three pleats on both pieces

View fullsize



It should make a cup when you're finished. Do the same thing to both pieces, *sewing on the wrong sides of the fabric.*

View fullsize



4. Nestle the two cups inside of one another so that the seams line up. Like spoons, the back side of one should be touching the front side of the other with the two wings

hanging out on each side.(Sorry no picture of this!) Sew over the top and bottom curves where the two cups overlap.

[View fullsize](#)



5. Pull the whole thing through, like turning a sock inside out

6. Sew a little bit down on the curves to hold them in place. There are four, two you'll be able to see two in the front and two in the back.

7. Attach elastic or ribbons. (Elastic doesn't hold up as well as ribbon with many washings.)

[View fullsize](#)



8. You might end up editing the pattern. Mine was a little big so I sewed an extra pleat into the chin after everything else.  
[View fullsize](#)



